



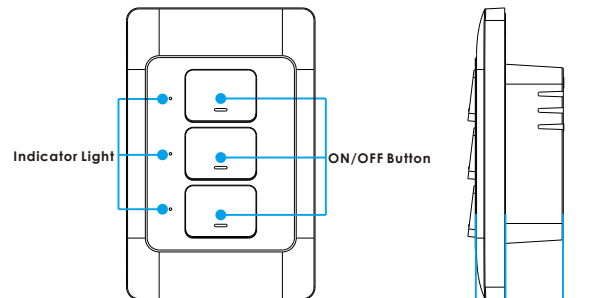
Smart Wall Switch User Guide

Model: CSH-SWITCH123

Notes Before Installation

1. Wi-Fi Only support a 2.4GHz network (802.11 b/g/n)
2. Only support one way/single pole circuit, Not compatible with 3-way
3. Neutral wire Required.
4. Must be installed by a licensed electrician.
5. Never connect the neutral wire to any switch wires
6. ON/OFF Button also can be used as reset button, long press to reset

your smart switch to factory defaults. Only do this if you are sure you want to erase all your settings



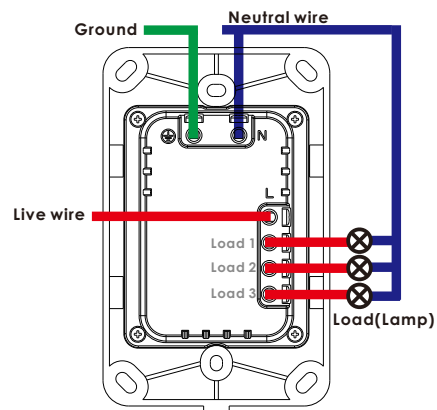
Specifications

Type	Smart Wall Switch
Model	CSH-SWITCH123
Power supply mode	Neutral+Live Wire
Rated Current	10A(Max)
Rated Voltage	AC100-240V~50/60Hz
Load Power	600W/Gang 1800W(Max)
Wireless Frequency	2.4GHZ
Wireless Standard	IEEE802.11 b/g/n
Product Size	116*75*35MM

Indicator light meaning

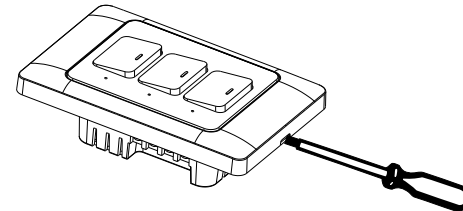
Colour	Status	Description
Blue	Rapidly Blinks	Ready for connection (Default Mode Only)
Blue	Slowly Blinks (1 time every 3s)	Ready for connection (AP Mode Only)
Blue light is always on	Off	Turn the light off
Red light is always on	On	Turn the light on
Blue	Flash Slowly	No Internet

Wiring Instructions

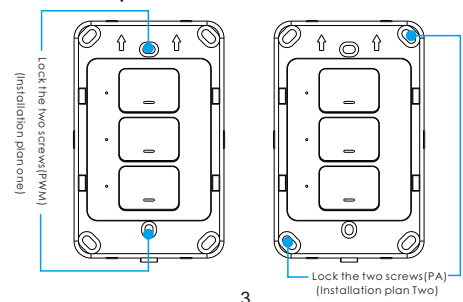


Safety Notice:
 • Switch off the power before installation
 • A neutral wire is needed to power the switch.

Use a small screwdriver to open the cover from the notch



Load the wall cassette and put the corresponding screws, cover the face plate



Install the "Connect Smart home" App

Step A .Find the "Connect smart home"app in Apple app store, Google Play, or scan the QR code below and install it.

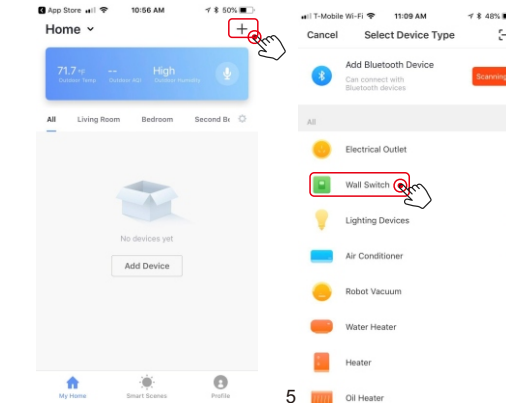


Step B .Register an account and follow the on-screen instructions.

Step C: Add the Smart Switch to the App

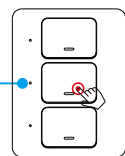
Note: This smart switch can only support 2.4G network and cannot work with 5.0G network. please check if your home network is 2.4G and make sure that your phone has been connected to your WI-FI home network

(1)Tap"+" button on top right corner to add device, the tap "Wall switch" to enter next page.

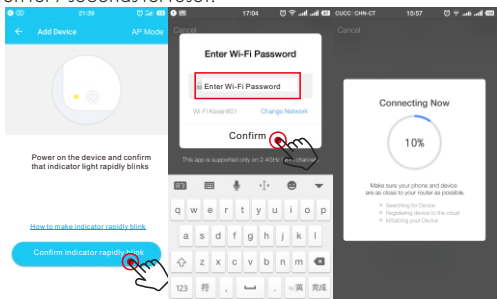


Default Mode(Recommend)

Indicator light rapidly blinks (2 times per second)



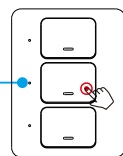
Step.1.Make sure the indicator blinks rapidly, if not, hold the ON/OFF button for 7 seconds for reset.



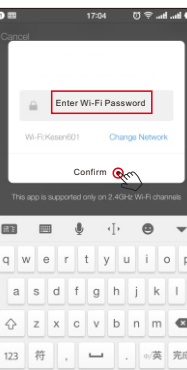
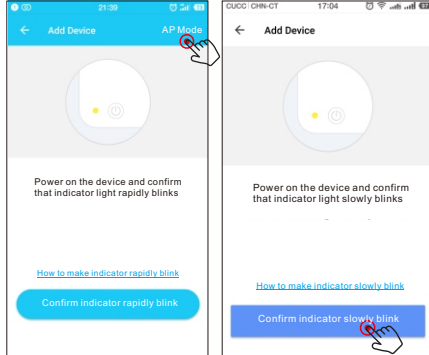
Note: When finished go to Step.9

AP Mode(Alternative)

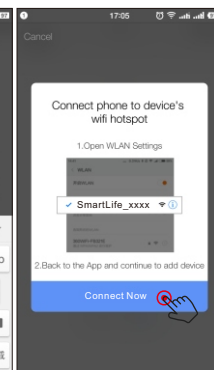
Indicator light slowly blinks (1 time every 3 second)



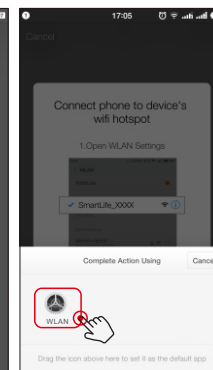
Step .1.When the indicator blinks rapidly, press and hold the ON/OFF button for another 7 seconds, the indicator will blink slowly.



Step.4



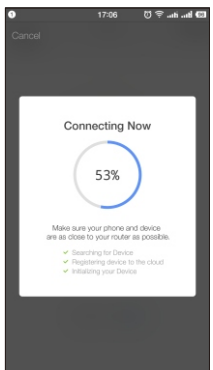
Step.5



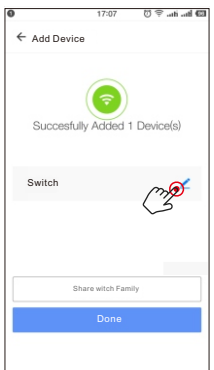
Step.6



Step.7



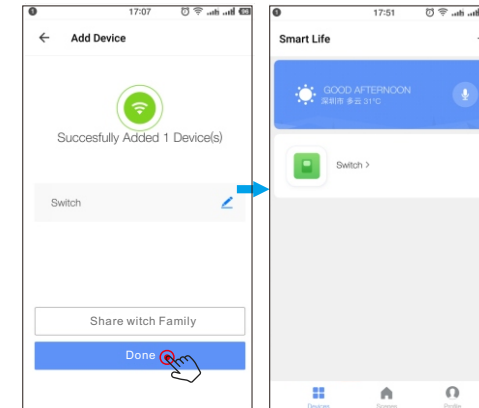
Step.8



Step.9

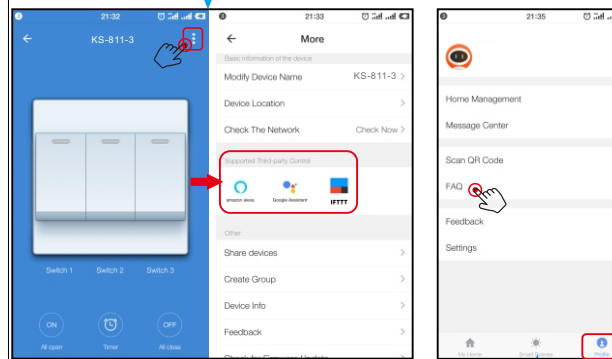
Step D:Give a name to the switch and tap"Done". you will find the device you've named is shown on the app home page. Tap the device to enter the setting page.

Note: The name you give to the device will be the name for voice control on Amazon Alexa or Google Home later. For example, the device is named"Switch" in this user guide.



10

If you want to connect to Amazon Alexa, Google Home, IFTTT control, please follow the instructions to find the guide in the app.



If you have any questions, please check the FAQ in the app, maybe you can find a solution

11